

Professional Electric Insect Control

Please read these instructions carefully and store in a safe place for future reference.

INDUSTRIAL

As part of the **Insect-O-Cutor®** brand of insect control products, the **Industrial** range is available in a white or stainless steel finish, and can be ceiling suspended or wall mounted.

CONTENTS OF PACKAGE

- 1 x Industrial flykiller
- 3 x Wall mounting screws and wall plugs
- 2 x Suspension hooks and chains
- 1 x Catch tray
- 1 x Wall mounting bracket
- 2 x High powered shatterproof UV tubes (IND41 - Fitted)
- or
- 3 x High powered shatterproof UV tubes (IND61 - Fitted)

WARNING - THIS APPLIANCE MUST BE EARTHED (CLASS 1)

INSECT CONTROL PRODUCTS

The **Industrial** range utilises ultra violet tubes to attract flying insects and then electrocutes them on a killing grid, before collecting them in a removable catch tray.

WARNING

The **Industrial** range is not to be used by persons with reduced physical, sensory or mental capabilities, or lack of experience and training, unless they have been given instruction.

Children should be supervised to ensure they do not play with the appliance.

The supply cord cannot be replaced. If the cord is damaged the appliance should be scrapped.

The **Industrial** range must only be used in areas which are free of dust and any possible explosive vapour mixture, is suitable for indoor use only and is not suitable for use in barns, stables and similar locations.

POSITIONING AND GUIDANCE FOR USE

The **Industrial** range should ideally be fixed around 2 - 3 meters above the ground, preferably in the darkest place within the area to be protected. Do not position the unit close to windows, skylights or other sources of light, or where it may be obscured by furniture, doors or other obstacles.

The **Industrial** range should ideally be in operation for 24 hours a day, ensuring your premises are kept free of flying insects. Insects are most attracted to the **Industrial** range units at night when there is no competition from daylight or other light sources.

GUARANTEE

The **Industrial** range has a five year guarantee and if maintained as recommended in these instructions should continue to work for many years. * Use of non-approved consumables may invalidate the guarantee.

INSTALLATION

INSTALLATION SHOULD BE CARRIED OUT BY SERVICE PERSONNEL ONLY.

The **Industrial** range should be mounted as shown in the mounting options section of this document. Keep out of reach of children. If wall mounting, the **Industrial** range should be hung 2 - 3m from the ground, so if the supplied chains do not allow this, chains of appropriate length and strength should be sourced.

The **Industrial** range should be hardwired into an appropriate power supply (as indicated on the specification label) by a qualified electrician. An appropriate means for disconnection should be incorporated into the fixed wiring in accordance with wiring rules.

Once installed into position, remove the two black cable ties that are holding the killing grid in position.

CLEANING

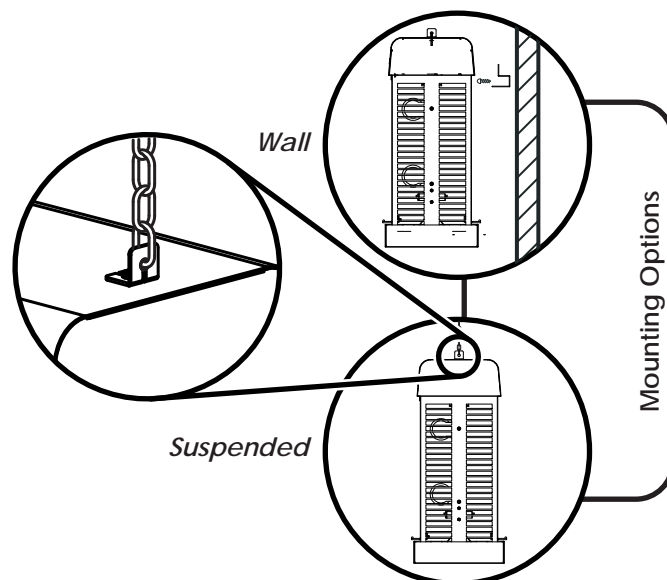
CLEANING SHOULD BE CARRIED OUT BY SERVICE PERSONNEL ONLY, AFTER ENSURING THAT THE UNIT IS DISCONNECTED FROM THE MAINS SUPPLY.

It is recommended that cleaning is carried out regularly every month. During cleaning the unit should be thoroughly wiped down with a damp cloth, removing any build up of dirt. Ensure the unit is completely dry before reconnecting it to the power supply.

The two parts of the killing grid can be removed for simple cleaning, after the tubes have been removed. (As shown on the reverse of this document.) To remove the killing grid, pull the bottom of the grid forward, freeing it from the PTFE holder, then pull the grid downwards, and away from the chassis. When replacing, ensure that the end of the grid wires are firmly held in place in the electric connectors.

MOUNTING FIXING CENTRES

METHOD	IND41 (White)	IND42 (S/S)	IND62 (S/S)
Wall	350mm	350mm	350mm
Desk	n/a	n/a	n/a
Suspended	600mm	600mm	600mm



*Excludes tubes and starters. Does not cover breakdown due to misuse, incorrect operation or use in an incorrect application.

INSECT-O-CUTOR®

FRONT GUARD OPENING

The front guard is connected to the power supply of the unit via a hidden switch. By opening the front guard, the connection is broken and power is cut to the unit. This ensures safe access to the unit for servicing and cleaning.

NB - WHEN REPLACING FRONT GUARD BACK INTO POSITION, ENSURE IT IS PUSHED FULLY IN PLACE AND THAT POWER IS RESTORED TO THE UNIT.

TUBE REPLACEMENT

TUBE REPLACEMENT SHOULD BE CARRIED OUT BY SERVICE PERSONNEL ONLY, AFTER ENSURING THAT THE UNIT IS DISCONNECTED FROM THE MAINS SUPPLY.

To ensure the efficiency of the **Industrial** range in catching flying insects, the UV tubes should be replaced annually. After twelve months the phosphor coating that emits the correct wavelength of UV light has burnt away and the UV output is diminished substantially.

To replace the UV tubes...

1. Swing the front guard forward, breaking the power supply to the unit.
2. Loosen the lampholder caps by rotating them anticlockwise.
3. Repeat the process on the opposite lampholder, then slide them both towards the centre of the tube.
4. Pull the tube free from the tube holders, and clear of the chassis.
5. Dispose of the used UV tube in conjunction with local WEEE regulations.

Ensure the lampholder caps are tightened securely, after inserting the replacement tubes.

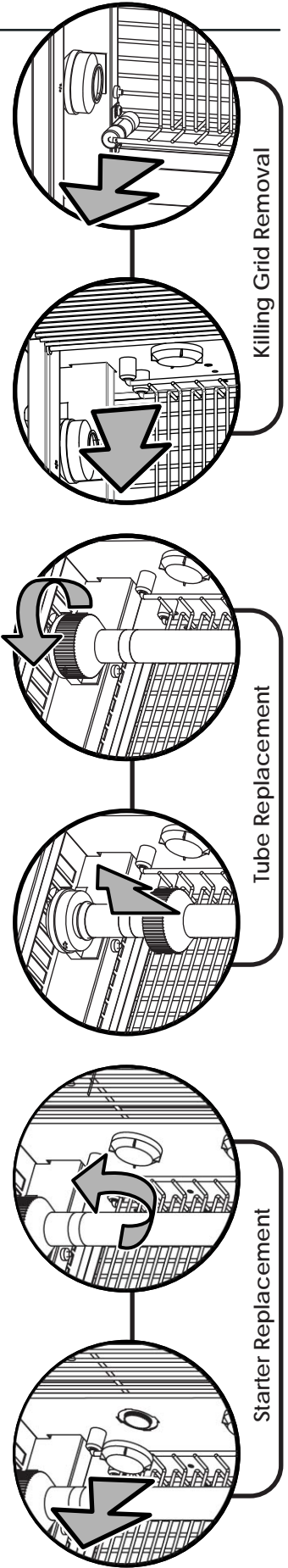
STARTER REPLACEMENT

STARTER REPLACEMENT SHOULD BE CARRIED OUT BY SERVICE PERSONNEL ONLY, AFTER ENSURING THAT THE UNIT IS DISCONNECTED FROM THE MAINS SUPPLY.

The starters provide an extra spark to initially light the UV tubes. Starters wear out and should be replaced at the same intervals as the UV tubes.

To replace the starters...

1. Release the starterholder cap by unscrewing it anticlockwise.
2. Rotate the starter anti-clockwise.
3. Pull the starter free from the unit.



SPECIFICATION / REPLACEMENT PARTS

Unit	IND41 White (IND41)	Unit	IND41 S/S (IND42)
Voltage	230V ~ 50Hz	Voltage	230V ~ 50Hz
Dimensions(mm)	490 x 690 x 240	Dimensions(mm)	490 x 690 x 240
Coverage	120 Sq. Meters	Coverage	120 Sq. Meters
Weight	12.5 Kg	Weight	12.5 Kg
Light Output	36W	Light Output	36W
Tubes	2 x TGX18-24S	Tubes	2 x TGX18-24S
Starter	2 x I154	Starter	2 x I154

Unit	IND61 S/S (IND62)
Voltage	230V ~ 50Hz
Dimensions(mm)	490 x 690 x 240
Coverage	180 Sq. Meters
Weight	12.7 Kg
Light Output	54W
Tubes	3 x TGX18-24S
Starter	3 x I154

DANGEROUS VOLTAGE

